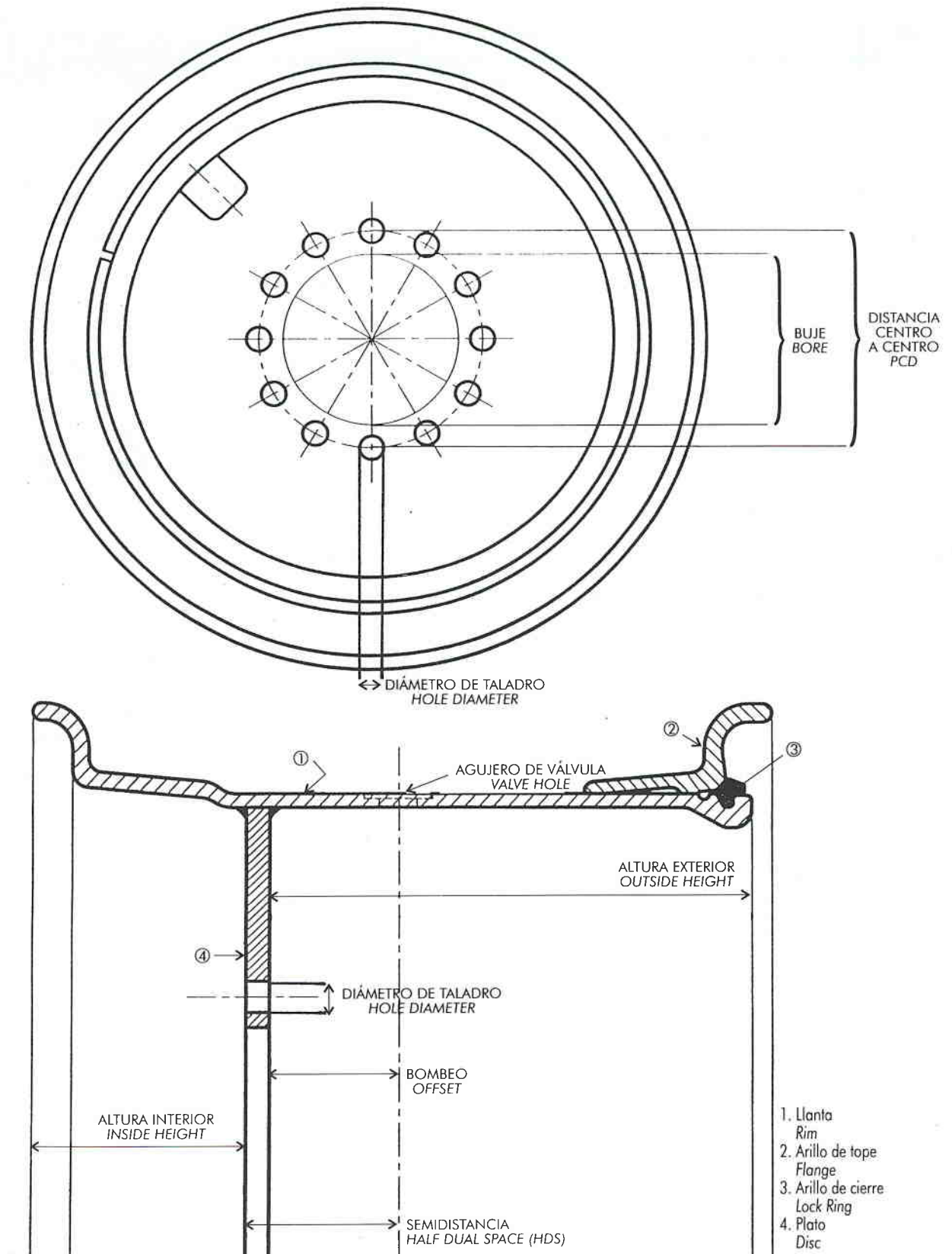
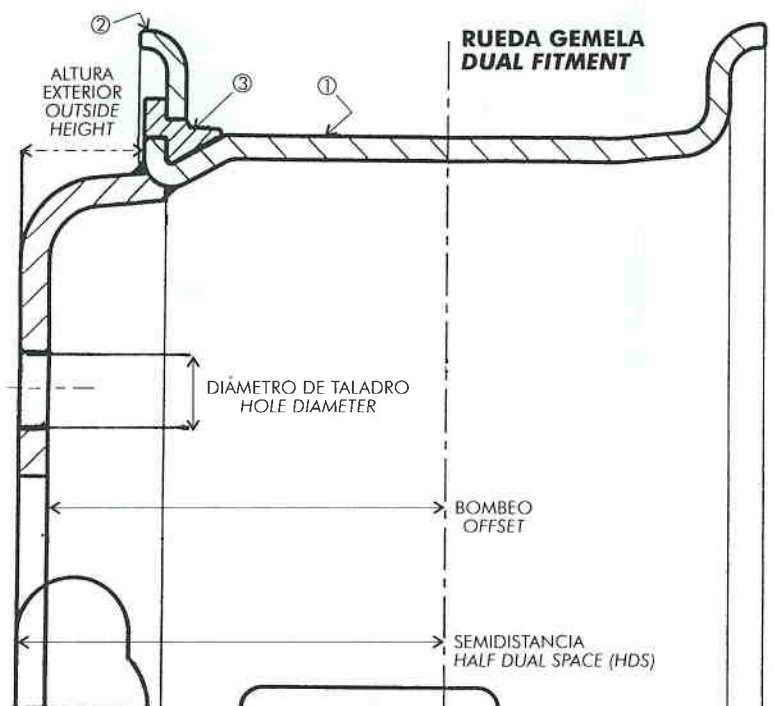
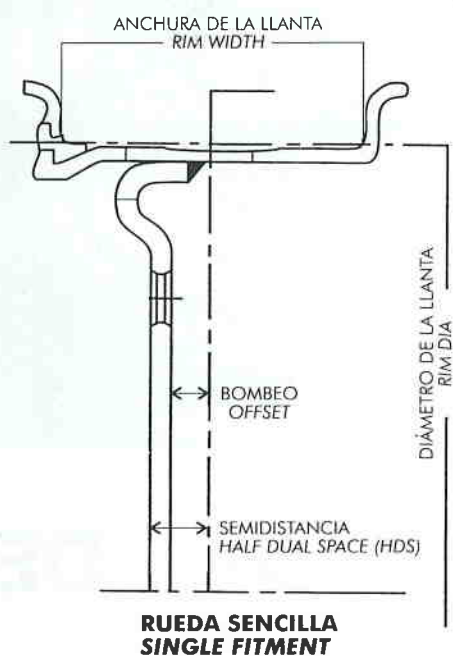
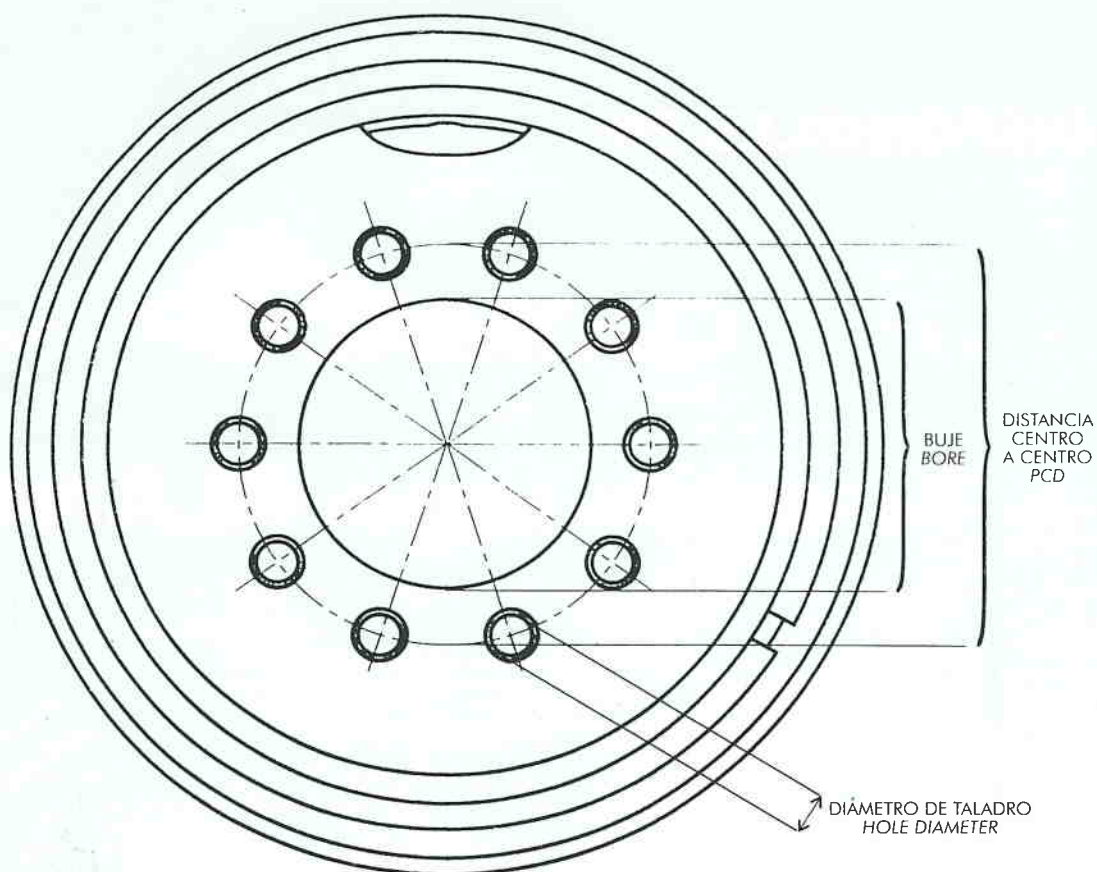


# DATOS TÉCNICOS

## DISCOS DE OBRAS PÚBLICAS EARTHMOVER WHEELS



# DISCOS DE VEHÍCULOS COMERCIALES COMMERCIAL WHEELS



1. Llanta / Rim
2. Arillo de tope / Flange
3. Arillo de cierre / Lock Ring